

12423 NE Whitaker Way
 Portland, OR 97230
 503-254-1794

Report Number: 21-014977/D002.R000
Report Date: 12/28/2021
ORELAP#: OR100028
Purchase Order:
Received: 12/22/21 13:14



Customer: THC
Product identity: 112321-1008-1208
Client/Metric ID: .
Laboratory ID: 21-014977-0001

Summary

Potency:

Analyte	Result (%)		
Δ8-THC†	86.5		
Δ8-THCV	0.338		
CBT†	0.121		
		<ul style="list-style-type: none"> ● Δ8-THC ● Δ8-THCV ● CBT 	
			CBD-Total <LOQ <hr/> THC-Total <LOQ (Reported in percent of total sample)

Residual Solvents:

All analytes passing and less than LOQ.

Pesticides:

All analytes passing and less than LOQ.

Metals:

Less than LOQ for all analytes.

Test results relate only to the parameters tested and to the samples as received by the laboratory. Test results meet all requirements of NELAP and the Columbia Laboratories quality assurance plan unless otherwise noted. This report shall not be reproduced, except in full, without the written consent of this laboratory. Samples will be retained for a maximum of 30 days from the receipt date unless prior arrangements have been made.
 Testing in accordance with: OAR 333-007-0430



License No. 800025015
FL License # CMTL-0003
CLIA No. 10D1094068

Certificate of Analysis

Compliance Test

GETHEMPD
1799 ISABEL RD OESTE
BOCA RATON, FL 33486

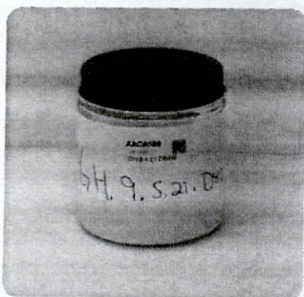
Batch # GH.9.4.21.D8dist
Batch Date: 2021-10-05
Extracted From: Hemp

Test Reg State: Florida

Order # GET211005-060001
Order Date: 2021-10-05
Sample # AAC189

Sampling Date: 2021-10-08
Lab Batch Date: 2021-10-08
Completion Date: 2021-10-13

Initial Gross Weight: 147.816 g



Product Image

Potency
Tested

Delta 8/Delta 10 Potency

Analyte	Dilution (1:n)	LOD (%)	LOQ (%)	Result (mg/g)	(%)
Specimen Weight: 49.760 mg					
Delta-8 THC	1000.000	0.000026	0.001	882.530	88.253
Delta-10 THC	1000.000	0.000003	0.001	<LOQ	<LOQ
Delta-9 THC	1000.000	0.000013	0.001	<LOQ	<LOQ
CBC	1000.000	0.000018	0.001	<LOQ	<LOQ
CBD	1000.000	0.000054	0.001	<LOQ	<LOQ
THCV	1000.000	0.000007	0.001	<LOQ	<LOQ
THCA-A	1000.000	0.000032	0.001	<LOQ	<LOQ
CBN	1000.000	0.000014	0.001	<LOQ	<LOQ
CBGA	1000.000	0.000008	0.001	<LOQ	<LOQ
CBG	1000.000	0.000248	0.001	<LOQ	<LOQ
CBDV	1000.000	0.000065	0.001	<LOQ	<LOQ
CBDa	1000.000	0.00001	0.001	<LOQ	<LOQ

Tested (LCUV)

Potency Summary

Total Delta 8 88.253%	Total Delta 10 None Detected
Total THC None Detected	Total CBD None Detected
Total CBG None Detected	Total CBN None Detected
Other Cannabinoids None Detected	Total Cannabinoids 88.253%

Xueli Gao
Xueli Gao
Ph.D., DABT
Lab Toxicologist

Aixia Sun
Aixia Sun
D.H.Sc., M.Sc., B.Sc., MT (AAB)
Lab Director/Principal Scientist



Definitions and Abbreviations used in this report: *Total CBD = CBD + (CBD-A * 0.877), *Total CBDV = CBDV + (CBDVA * 0.87), *Total THC = THCA-A * 0.877 + Delta 9 THC, *Total THCV = THCV + (THCVA * 0.87), *CBG Total = (CBGA * 0.877) + CBG, *CBN Total = (CBNA * 0.877) + CBN, *Total CBC = CBC + (CBCA * 0.877), *Other Cannabinoids Total = Total Cannabinoids - All the listed cannabinoids on the summary section, *Total Detected Cannabinoids = Delta8-THC + Total CBN + CBT + Delta8-THCV + Total CBG + Total CBD + Total THCV + CBL + Total THC + Total CBC + Total CBDV + Delta10-THC + THCO-Acetate, *Analyte Details above show the Dilution = Dilution Factor (ppb) = Parts per Billion, (%) = Percent, (cfu/g) = Colony Forming Unit per Gram (cfu/g) = Colony Forming Unit per Gram, LOD = Limit of Detection, Detection, (µg/g) = Microgram per Gram (ppm) = Parts per Million, (ppm) = (µg/g), (aw) = aw (area ratio) = Area Ratio, (mg/Kg) = Milligram per Kilogram, *Measurement of Uncertainty = +/- 5%

This report shall not be reproduced, without written approval, from ACS Laboratory. The results of this report relate only to the material or product analyzed. Test results are confidential unless explicitly waived otherwise. Accredited by a third-party accrediting body as a competent testing laboratory pursuant to ISO/IEC 17025 of the International Organization for Standardization.



License No. 800025015
 FL License # CMTL-0003
 CLIA No. 10D1094068

Certificate of Analysis

Compliance Test

GETHEMPD
 1799 ISABEL RD OESTE
 BOCA RATON, FL 33486

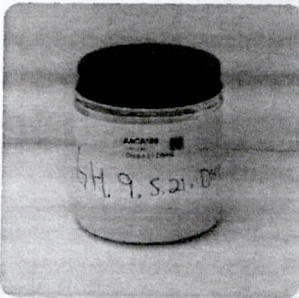
Batch # GH.9.4.21.D8dist
 Batch Date: 2021-10-05
 Extracted From: Hemp

Test Reg State: Florida

Order # GET211005-060001
 Order Date: 2021-10-05
 Sample # AACA189

Sampling Date: 2021-10-08
 Lab Batch Date: 2021-10-08
 Completion Date: 2021-10-13

Initial Gross Weight: 147.816 g



Potency
 Tested

Product Image

Delta 8/Delta 10 Potency 12

Specimen Weight: 49.760 mg

Analyte	Dilution (1:n)	LOD (%)	LOQ (%)	Result (mg/g)	(%)
Delta-8 THC	1000.000	0.000026	0.001	882.530	88.253
Delta-10 THC	1000.000	0.000003	0.001		<LOQ
Delta-9 THC	1000.000	0.000013	0.001		<LOQ
CBC	1000.000	0.000018	0.001		<LOQ
CBD	1000.000	0.000054	0.001		<LOQ
THCV	1000.000	0.000007	0.001		<LOQ
THCA-A	1000.000	0.000032	0.001		<LOQ
CBN	1000.000	0.000014	0.001		<LOQ
CBGA	1000.000	0.00008	0.001		<LOQ
CBG	1000.000	0.000248	0.001		<LOQ
CBDV	1000.000	0.000065	0.001		<LOQ
CBDA	1000.000	0.00001	0.001		<LOQ

Tested
 (LCUV)

Potency Summary

Total Delta 8 88.253%	Total Delta 10 None Detected
Total THC None Detected	Total CBD None Detected
Total CBG None Detected	Total CBN None Detected
Other Cannabinoids None Detected	Total Cannabinoids 88.253%

Xueli Gao
 Ph.D., DABT
 Lab Toxicologist

Alida Sun
 D.H.Sc., M.Sc., B.Sc., MT (AAB)
 Lab Director/Principal Scientist



Definitions and Abbreviations used in this report: *Total CBD = CBD + (CBD-A * 0.877), *Total CBDV = CBDV + (CBDVA * 0.87), *Total THC = THCA-A * 0.877 + Delta 9 THC, *Total THCV = THCV + (THCVA * 0.87), *CBG Total = (CBGA * 0.877) + CBG, *CBN Total = (CBNA * 0.877) + CBN, *Total CBC = CBC + (CBCA * 0.877), *Other Cannabinoids Total = Total Cannabinoids - All the listed cannabinoids on the summary section, *Total Detected Cannabinoids = Delta8-THC + Total CBN + CBT + Delta8-THCV + Total CBG + Total CBD + Total THCV + CBL + Total THC + Total CBC + Total CBDV + Delta10-THC + THCO-Acetate, *Analyte Details above show the Dry Weight Concentrations unless specified as 12% moisture concentration, (mg/ml) = Milligrams per Milliliter, LOQ = Limit of Quantitation, LOD = Limit of Detection, Dilution = Dilution Factor (ppb) = Parts per Billion, (%) = Percent, (cfu/g) = Colony Forming Unit per Gram (cfu/g) = Colony Forming Unit per Gram, LOD = Limit of Detection, (µg/g) = Microgram per Gram (ppm) = Parts per Million, (ppm) = (µg/g), (aw) = aw (area ratio) = Area Ratio, (mg/Kg) = Milligram per Kilogram, *Measurement of Uncertainty = +/- 5%

This report shall not be reproduced, without written approval, from ACS Laboratory. The results of this report relate only to the material or product analyzed. Test results are confidential unless explicitly waived otherwise. Accredited by a third-party accrediting body as a competent testing laboratory pursuant to ISO/IEC 17025 of the International Organization for Standardization.